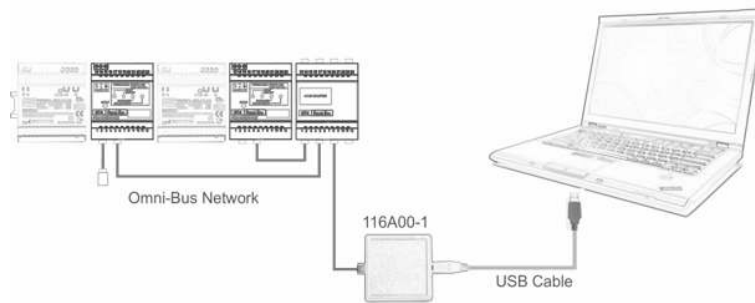


Application



USB driver installation: Windows XP

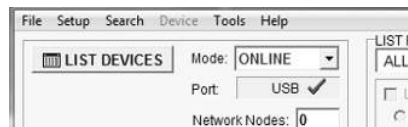
- Ensure that the USB Programming Interface is **unplugged** from the computer.
- Install the latest release of **HAI OMNIBUS** Installation software.
- When the message "**The software you are installing has not passed Windows Logo testing**" is displayed, click **Continue Anyway**.
- Complete the Software installation.
- Connect the USB side of the Interface to the computer via the supplied USB cable.
- Wait for the "Found New Hardware Wizard" to appear and select **No, not this time**. Click **Next**.
- Select **Install the software automatically** and click **Next**.
- When the message "**The software you are installing for this hardware has not passed Windows Logo testing**" is displayed, click **Continue Anyway**.
- Wait for Windows to finish the driver installation and click **Finish**.
- Upon successful driver installation the LED next to the USB connector on the device should stop flashing and turn **constant green**. If not, see the installation steps on page 2 for manual installation of the USB driver.

USB driver installation: Windows Vista / Windows 7

- Ensure that the USB Programming Interface is **unplugged** from the computer.
- Install the latest release of **HAI OMNIBUS** Installation software.
- When the message "**Can't verify the publisher of this driver software**" is displayed, click **Install this driver software anyway**.
- Complete the Software installation.
- Connect the USB side of the Interface to the computer via the supplied USB cable.
- Wait for Windows to finish the driver installation.
- Upon successful driver installation the LED next to the USB connector on the device should stop flashing and turn **constant green**. If not, see the installation steps on page 2 for manual installation the USB driver.

Using the USB Programming Interface

- Complete the USB driver installation for the appropriate operating system as described above.
- Connect the USB side of the Interface to the computer via the supplied USB cable.
- Connect the other side of the interface (RJ45) to the Omni-Bus Network.
- Run the **HAI OMNIBUS** software.



- A green ticked icon in OMNIBUS indicates that the USB interface is connected and ready. If not, see *Compatibility Mode* below.

Compatibility Mode

- For certain **Windows Vista** and **Windows 7** installations it may be necessary to run the OMNIBUS software in **XP Compatibility** mode. If the USB Interface is not detected in OMNIBUS after successful driver installation, follow these steps:
 - Close the OMNIBUS software.
 - On the Desktop, **right click** on the OMNIBUS icon and select **Properties**.
 - Select the **Compatibility** tab.
 - Enable the '**Run this program in compatibility mode for**' checkbox and select '**Windows XP (Service Pack ...)**' from the dropdown menu.
 - Click **OK** and run the OMNIBUS software again.

Manual USB driver installation: Windows XP

Proceed with the following steps only if the USB Driver Installation procedure on page 1 was unsuccessful

- Ensure that the latest release of OMNIBUS software is installed
- Plug the USB interface into the PC USB port
- Wait for the “**Found New Hardware Wizard**” to appear
- Select the third option: **No, not this time**. Click **Next**.
- Select second option: **Install from a list or specific location**. Click **Next**.
- Select first option: **Search for the best driver**.
- Uncheck **Search for removable media**
- Check **Include this location in the search**
- Browse to the location where the USB drivers are installed (default: C:\Program Files\HAI\OmniBus\Drivers\USB)
- Click **Next**.
- Click **Continue Anyway**.
- Wait for installation to complete
- Click **Finish**

Manual USB driver installation: Windows Vista

Proceed with the following steps only if the USB Driver Installation procedure on page 1 was unsuccessful

- Ensure that the latest release of OMNIBUS software is installed
- Plug the USB interface into the PC USB port
- Wait for the “**Found New Hardware Wizard**” to appear
- Select first option: **Locate and install driver software**
- Select third option: **Don’t search online**
- Select second option: **I don’t have the disc. Show me other options**.
- Select second option: **Browse my computer for driver software**
- Browse to the location where the USB drivers are installed (default: C:\Program Files\HAI\OmniBus\Drivers\USB)
- Click **Next**
- Select second option: **Install this driver software anyway**
- Wait for installation to complete
- Click **Close**

Manual USB driver installation: Windows 7

Proceed with the following steps only if the USB Driver Installation procedure on page 1 was unsuccessful

- Ensure that the latest release of OMNIBUS software is installed
- Plug the USB interface into the PC USB port
- Click on the **Windows Start button** at the lower left corner of the screen.
- Right click on **Computer** and select **Properties**.
- Click on **Device Manager**.
- Under **Other device**, right click on **BUS USB Programming Interf** and select **Update Driver Software**.
- Select second option: **Browse my computer for driver software**
- Browse to the location where the USB drivers are installed (default: C:\Program Files\HAI\OmniBus\Drivers\USB)
- Click **Next**
- Select second option: **Install this driver software anyway**
- Wait for installation to complete
- Click **Close**