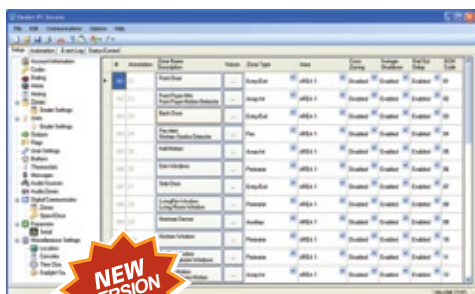




PC Access Technical Sheet



It's even easier to program an HAI system with the latest PC Access!

PC Access Software

PC Access allows the user to set up, program, and monitor a home control system over a modem or by a serial or network connection. PC Access is the only software product HAI offers that has the ability to program an HAI home control system. Registered users receive free updates.

New commands for comparing temperatures (indoor vs. outdoor, for example), timers, humidity, thermostat settings and more make innovative energy-saving strategies easier. We've also made it easier for customers to make adjustments to their systems (wake up times, "away" temperatures, holidays, for example) without changing the system's programming.

Auto-completion feature allows proficient programmers to type the first few letters of a program line. PCAccess jumps to the command, speeding the process.

Completely redesigned with a contemporary look and feel.

New Features Include:

- Enhanced automation programming:
 - ability to save programs to disk for reuse
 - ability to add comments to programs
 - simplified program editing
 - search and replace
 - support for enhanced programming with multiple triggers, conditions and commands in a single statement
- Integrated help and documentation
- Account summary page
- Fewer mouse clicks and keystrokes
- Easy tree-based navigation
- Simplified set up where all names and related properties of an object can be edited on a single page
- All lists can be sorted and/or filtered
- Supports longer, more descriptive, "friendly" names
- Ability to name UPB™ links and other lighting scenes
- Integrated firmware updater for new flash-enabled controllers

PC Access Products

Description	Part #
Dealer PC Access	1105W
Spanish Dealer PC Access	1105WSP
End User PC Access	1106W
Lumina PC Access	1111

Product Requirements:

The End User Version and Dealer Version support the HAI Lumina, Lumina Pro, Omni LT, Omni, Omni II, Omni IIe, OmniPro, and OmniPro II home control systems. The Lumina Only Version supports both the HAI Lumina and Lumina Pro home control systems. This software package will run under the Windows 95, Windows 98, Windows NT, Windows ME, Windows 2000, Windows XP, and Windows Vista (Version 2.14+) operating systems.