

## AXIS 233D Network Dome Camera

High-speed dome camera with progressive scan and 35x zoom.



- > 35x zoom
- > Area zoom
- > Progressive scan
- > Electronic image stabilizer
- > Wide dynamic range
- > Auto-tracking

AXIS 233D Network Dome Camera provides exceptional features such as progressive scan, 35x optical zoom, and fast and precise pan/tilt mechanics for superb performance and image quality. AXIS 233D is designed for use in demanding security installations such as airports, casinos, stadiums and ports.

AXIS 233D's powerful zoom capabilities (35x optical and 12x digital zoom) enable distant objects to be monitored in sharp detail. Its unique area zoom feature enables immediate zoom to any desired part of a scene.

Other factors also contribute to the camera's high image quality. They include progressive scan, which provides full resolution images of moving objects without distortion; Electronic Image Stabilizer (EIS), which reduces the effect of vibrations caused by traffic or wind; and 128x Wide Dynamic Range (WDR), which ensures high-quality video even in complex lighting conditions.

The camera's intelligent video capabilities include video motion detection, audio detection and auto-tracking. With auto-tracking, a moving object within the camera's field of view can be automatically detected and followed. This is particularly beneficial in unmanned video surveillance setups with automated recording.

AXIS 233D offers highly precise and responsive pan/tilt performance. Its low speed movement of 0.05° per second makes it possible to follow an object from a long distance, while its maximum speed of 450° per second allows for extremely fast pan and tilt.



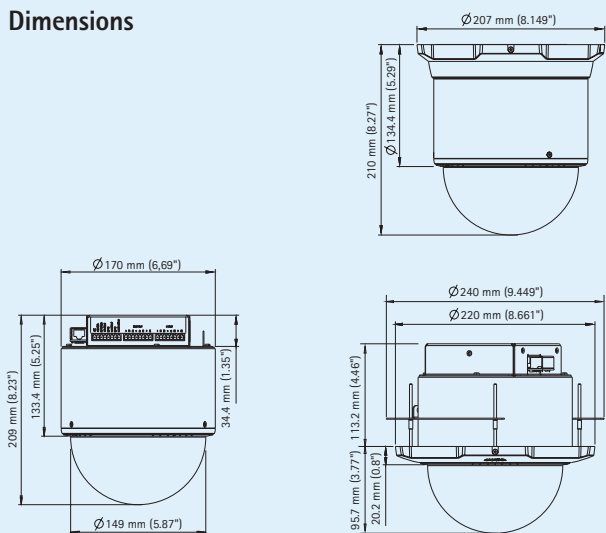
## Technical specifications – AXIS 233D Network Dome Camera

Camera	
<b>Models</b>	AXIS 233D Network Dome Camera 60 Hz (NTSC) AXIS 233D Network Dome Camera 50 Hz (PAL)
<b>Image sensor</b>	1/4" ExView HAD Progressive scan CCD
<b>Lens</b>	3.4 – 119 mm, F1.4 – 4.2, autofocus, automatic day/night, horizontal angle of view: 1.73° – 55.8°
<b>Minimum illumination</b>	Color: 0.5 lux at 30 IRE B/W: 0.008 lux at 30 IRE
<b>Shutter time</b>	NTSC: 1/30 000 s – 0.5 s PAL: 1/30 000 s – 1.5 s
<b>Pan/Tilt/Zoom</b>	E-flip 100 preset positions Pan: 360° endless, 0.05 – 450°/s Tilt: 180°, 0.05 – 450°/s 35x optical zoom and 12x digital zoom, total 420x zoom Guard tour Control queue
Video	
<b>Video compression</b>	MPEG-4 Part 2 (ISO/IEC 14496-2) Motion JPEG
<b>Resolutions</b>	NTSC: 704x480 – 176x120 PAL: 704x576 – 176x144
<b>Frame rate MPEG-4</b>	Up to 30/25 fps in all resolutions
<b>Frame rate Motion JPEG</b>	Up to 30/25 fps in all resolutions
<b>Video streaming</b>	Simultaneous MPEG-4 and Motion JPEG Controllable frame rate and bandwidth VBR/CBR MPEG-4
<b>Image settings</b>	Wide Dynamic Range (WDR), Electronic Image Stabilization (EIS), manual shutter time, compression, color, brightness, sharpness, rotation, aspect ratio correction Text and image overlay Privacy mask
Audio	
<b>Audio streaming</b>	Two-way, full or half duplex
<b>Audio compression</b>	G.711 PCM 64 kbit/s G.726 ADPCM 32 or 24 kbit/s
<b>Audio input/output</b>	External microphone input or line input, line level output

Network	
<b>Security</b>	Password protection, IP address filtering, HTTPS encryption, IEEE 802.1X network access control, digest authentication, user access log
<b>Supported protocols</b>	IPv4/v6, HTTP, HTTPS, QoS Layer 3 DiffServ, FTP, SMTP, Bonjour, UPnP, SNMPv1/v2c/v3 (MIB-II), DNS, DynDNS, NTP, RTSP, RTP, TCP, UDP, IGMP, RTCP, ICMP, DHCP, ARP, SOCKS
System integration	
<b>Application Programming Interface</b>	Open API for software integration, including VAPIX® from Axis Communications available at <a href="http://www.axis.com">www.axis.com</a>
<b>Intelligent video</b>	Video motion detection, audio detection, auto-tracking
<b>Alarm triggers</b>	Intelligent video, external input, PTZ position
<b>Alarm events</b>	File upload via FTP, HTTP and email Notification via email, HTTP and TCP External output activation PTZ position
<b>Video buffer</b>	36 MB pre-and post alarm
General	
<b>Casing</b>	Metal casing, polycarbonate dome cover
<b>Processors and memory</b>	ETRAX FS, ARTPEC-2, 64 MB RAM, 8 MB Flash
<b>Power</b>	22 – 40 V DC, max. 20 W 18 – 30 V AC, max. 25 VA
<b>Connectors</b>	RJ-45 for 10BASE-T/100BASE-TX Three terminal blocks for 4 alarm inputs and 4 outputs, power in, power out audio mic/line in, audio line out
<b>Operating conditions</b>	-5 °C to 45 °C (23 °F to 113 °F) Humidity 20 – 80% RH (non-condensing)
<b>Approvals</b>	EN 55022 Class B, EN 55024, EN 61000-3-2, EN 61000-3-3, EN 61000-6-1, EN 61000-6-2, FCC Part 15 Subpart B Class B, VCCI Class B, C-tick AS/NZS CISPR22, ICES-003 Class B, EN 60950-1 Power supply: EN 60950-1, PSE, TUV/GS, cUL, CE, CB, SAC
<b>Weight</b>	2.5 kg (5.5 lb.)
<b>Included accessories</b>	Installation Guide, CD with User's Manual, recording software, installation and management tools, mounting and connector kits, indoor power supply, clear and smoked dome covers, Windows decoder 1-user license

More information is available at [www.axis.com](http://www.axis.com)

### Dimensions



### Optional accessories

AXIS T95A Series Dome Housing



Power supply\*



\*recommended for AXIS T95A10 Dome Housing

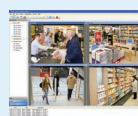
AXIS 295  
Video Surveillance  
Joystick



High PoE products



AXIS T90A Illuminators



For information on AXIS Camera Station and video management software from Axis' Application Development Partners, see [www.axis.com/products/video/software/](http://www.axis.com/products/video/software/)