

AXIS 214 PTZ Network Camera

Day and night camera with pan/tilt/zoom and audio.



- > 18x optical zoom
- > Superior image quality
- > Day/night function
- > Built-in motion detection
- > Two-way audio

AXIS 214 PTZ Network Camera is a high performance camera for professional surveillance and remote monitoring designed for use in mid-sized businesses, such as retail stores and supermarkets. It combines a high quality color camera with the flexibility of remote pan/tilt/zoom through operator control.

Incorporating an 18x optical motorized lens with auto focus, the AXIS 214 PTZ makes it possible to zoom in on small or distant objects with exceptional clarity. The operator can easily track objects with high precision using a mouse or joystick.

Simultaneous MPEG-4 and Motion JPEG provides the AXIS 214 PTZ with superior image quality.

With automatic day and night functionality, this camera provides perfect color images in lowlight conditions as well as sharp black and white images in extremely poor lighting conditions.

The camera has built-in motion detection and powerful event management.

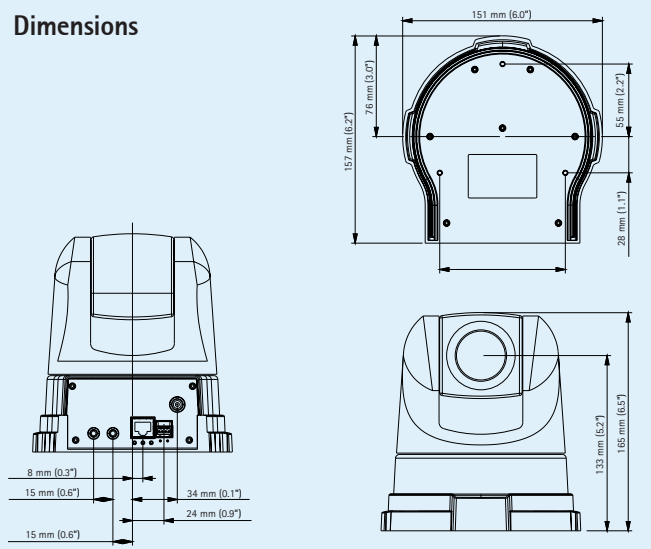
The built-in audio support increases the monitoring options by enabling remote users to not only view, but also listen in on an area and communicate orders or requests to visitors or intruders.



Technical specifications – AXIS 214 PTZ Network Camera

Camera		Network	
Models	AXIS 214 PTZ: 50 Hz (PAL) AXIS 214 PTZ: 60 Hz (NTSC)	Security	Password protection, IP address filtering, HTTPS encryption, IEEE 802.1X network access control
Image sensor	1/4" ExView HAD CCD	Supported protocols	IPv4/v6, HTTP, HTTPS, QoS Layer 3 DiffServ, FTP, SMTP, Bonjour, UPnP, SNMPv1/v2c/v3(MIB-II), DNS, DynDNS, RTSP, RTP, TCP, UDP, IGMP, RTCP, ICMP, DHCP, ARP, SOCKS
Lens	4.1 – 73.8 mm, F1.3 – 3.0, auto focus, auto day/night, near focus limit 10 mm (wide) or 800 mm (tele) to infinity Angle of view, horizontal: 2.7° – 48°	System integration	
Minimum illumination	Color mode: 0.3 lux at F1.4, 30IRE Black/white mode: 0.005 lux at F1.4, 30IRE	Application Programming Interface	Open API for software integration, including VAPIX® from Axis Communications available at www.axis.com
Shutter time	1/10000 s to 1 s	Intelligent video	Video motion detection, audio detection
Pan/Tilt/Zoom	20 preset positions ± 170° pan range, 100°/s pan speed -30° – 90° tilt range, 90°/s tilt speed 18x optical, 12x digital zoom Guard tour, sequence mode, control queue Supports Windows compatible joysticks Designed for operator control	Alarm triggers	Intelligent video, PTZ preset, external input
		Alarm events	File upload via FTP, HTTP and email Notification via email, HTTP and TCP External output activation
		Video buffer	9 MB pre- and post alarm
Video		General	
Video compression	MPEG-4 Part 2 (ISO/IEC 14496-2) Motion JPEG	Processors and memory	ETRAX 100LX, ARTPEC-2, 32 MB RAM, 8 MB Flash
Resolutions	160x120 to 704x576	Power	11 – 13 V DC max. 14 W
Frame rate MPEG-4	Up to 25/21 fps at 4CIF/2CIFExp Up to 30/25 fps at 2CIF/CIF/QCIF	Connectors	RJ-45 10BASE-T/100BASE-TX Terminal block for 1 alarm input, 1 output and alternative power connection 3.5 mm mic/line in, 3.5 mm line out
Frame rate Motion JPEG	Up to 30/25 fps in all resolutions	Operating conditions	0 – 45 °C (32 – 113 °F) Humidity 20 – 80% RH (non-condensing)
Video streaming	Simultaneous MPEG-4 and Motion JPEG Controllable frame rate and bandwidth VBR/CBR MPEG-4	Approvals	EN 55022 Class A, EN 61000-3-2, EN 61000-3-3, EN 55024, EN61000-6-1, EN61000-6-2, FCC Part 15 Subpart B Class B, ICES-003 Class A, VCCI Class A, C-tick AS/NZS CISPR 22, EN 60950-1 Power supply: EN 60950-1, UL, CSA
Image settings	Compression, color, brightness, sharpness, contrast, white balance, exposure control, backlight compensation, aspect ratio correction Rotation: 90°, 180°, 270° Text and image overlay De-interlace filter	Weight	1110 g (2.45 lb.)
		Included accessories	Power supply, ceiling mount kit, Installation Guide, CD with installation tools, recording software and User's Manual, Windows decoder 1-user license
Audio		More information is available at www.axis.com	
Audio streaming	Two-way (full or half duplex), one-way		
Audio compression	G.711 PCM 8 kHz G.726 ADPCM 8 kHz Configurable bit rate		
Audio input/output	External microphone input or line input, line level output		

Dimensions

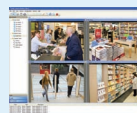


Optional accessories

Various housings



AXIS 295 Video Surveillance Joystick



For information on AXIS Camera Station and video management software from Axis' Application Development Partners, see www.axis.com/products/video/software/